



# ModelOp Center (PAT)

Driving Returns on Enterprise AI Investments



AI is allowing enterprises to re-imagine their business and AI models are the decision-making assets driving the change. Just like any other critical business asset, AI models must be systematically managed and governed to realize the promised value of Enterprise AI.

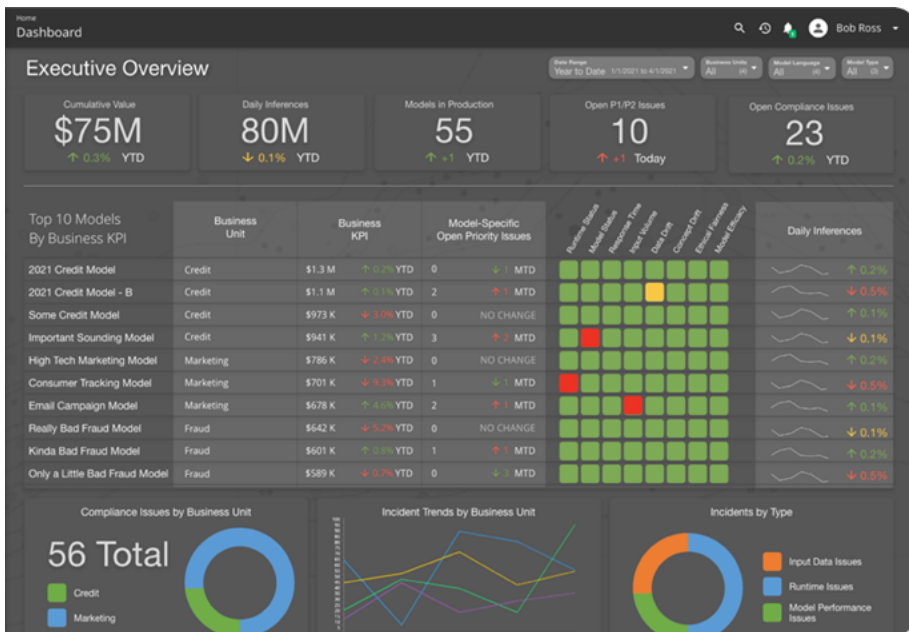
ModelOp Center is a ModelOps platform that automates the operations and governance of AI and analytic models, so you have the insights, reliability, and auditability to scale your current and future AI initiatives.

## Key Concepts

- ModelOps is necessarily separate and distinct from Data Science
- ModelOps is an enterprise capability

## Critical Questions to Answer

- How many models are in production?
- Where are they running?
- How long have they been in business?
- Have models been validated and approved?
- Who approved them?
- What tests were run?
- What decisions is the model making?
- Are results reliable/accurate?
- Are compliance and regulatory requirements being satisfied?
- Can that be proven?
- Are models performing within controls/thresholds?
- What is the ROI for the model?



ModelOp Center Dashboard

**Complete Enterprise Model Visibility and Auditability**  
With a 360 view of all production models, you have continuous oversight to ensure expected business value, operational efficiency, and risk and compliance mandates are met. Custom views and reports make it easy for stakeholder-specific insights and audit requirements to be satisfied.



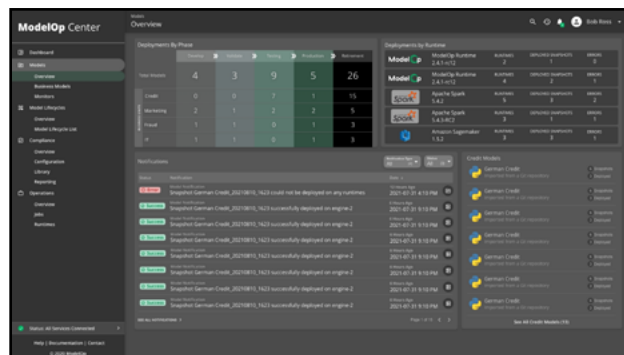
ModelOp Center's Business, Operational, and Risk Visibility for All AI Models



## Enterprise Model Inventory

ModelOp Center’s enterprise model inventory is the “system of record” for all production models, regardless of type (ML and non-ML), how they are built, or where they are run (on-premises, in the cloud, at the edge, or a 3rd party vendor). It includes a comprehensive model description (schema) along with necessary business, risk and compliance documentation.

Automated, comprehensive tracking of every action taken for each model (who, what, when, where, why) provides provenance and a complete lineage for every model and the foundation for delivering the business, risk, data science and IT stakeholders the insights needed for successful AI.



*ModelOp Center's Production Model Inventory Manages All Current and Future Model Technologies*

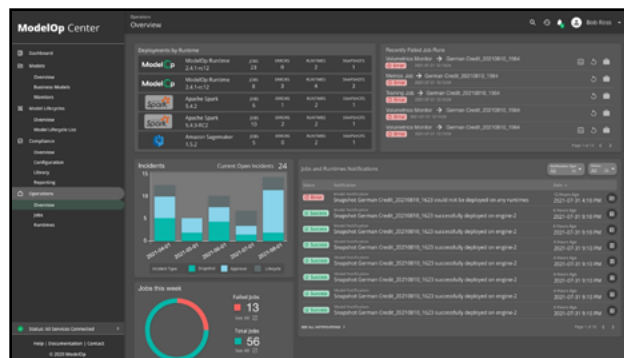
## End-to-end Model Governance Automation

Enterprise-scale process automation that dynamically adjusts to the specific business, operational, risk and compliance needs of each model throughout its production life delivers reliable and scalable AI.

Native integrations with model development tools, IT systems, Model Risk Management systems, and business applications provide a robust ModelOps platform while extending the value of existing AI investments.

Native integrations include:

- IT systems: such as ServiceNow, Jira and BMC
- Data science tools: such as AWS Sagemaker, Algorithmia, Domino Data Labs and Azure ML
- Development tools: such as Jenkins, Python and R
- Model risk management systems: such as Archer
- Business applications: such as Power BI and Tableau



*ModelOp Center's Governance Process Automation*

ModelOp Center’s powerful abstraction layer and modern microservices architecture provide the flexibility to support current and future enterprise AI tools, infrastructure and business decisions and investments.

ModelOp Center provides end-to-end model governance, visibility and auditability for all enterprise models so you can rapidly grow and scale AI -- cost effectively.

## Benefits

- Reduce business risk with AI governance throughout model's life cycle
- Accelerate time from deployment to decision-making by 50%
- Scale AI initiatives with enterprise automated processes that unite teams